

# i-Tree Landscape

landscape.itreetools.org



Tree & Forest Benefits  
at your fingertips!  
*in 5 easy steps...*

**Canopy & Impervious**

Remove	Type	ID	Swap	Highlight	Area	Canopy
					acre	%
X	Block Group	391535074001			474.4	7.85
	Block Group	391535073001			120	2.13

**Carbon**

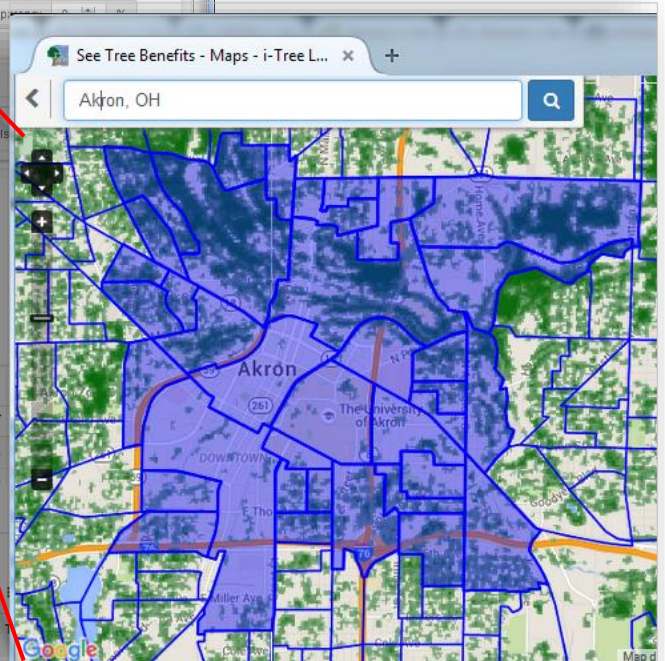
Remove	Type	ID	Swap	Highlight	Carbon Storage	Carbon Sequestration	CO <sub>2</sub> equivalent Storage
					Short Ton	\$/yr	t/yr
X	Block Group	391535011001			668,776	4,803.1	21,568
	Block Group	391535074001			802,832	6,112.2	28,704

**Carbon**

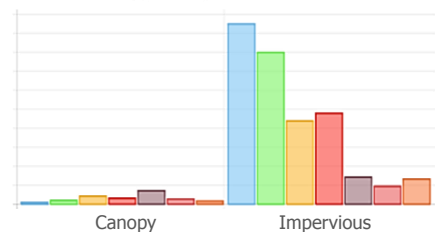
Remove	Type	ID	Swap	Highlight	CO	NO <sub>2</sub>	O <sub>3</sub>	PM <sub>2.5</sub>	SO <sub>2</sub>	PM <sub>10</sub>
					\$/yr	lb/yr	\$/yr	lb/yr	\$/yr	lb/yr
X	Block Group	391535011001			73	109.8	101	481.9	9,389	7,482.3
	Block Group	391535074001			88	146.6	135	643.3	12,535	8,080.4

**Carbon**

Remove	Type	ID	Swap	Highlight	Transpiration	Evaporation	Rainfall Interception	Avoided Runoff
					(MG/yr)	(MG/yr)	(MG/yr)	(MG/yr)
X	Block Group	391535011001			19.2	13.6	13.6	2.4
X	Block Group	391535074001			25.6	18.1	18.1	3.2



Canopy & Impervious Area



5 Steps:

- 1) Find your Location – Census areas, cities, counties, watersheds, and more
- 2) Explore Location Data – Canopy & impervious amounts, census information...
- 3) See Tree Benefits – Carbon storage & sequestration, air pollution removal...
- 4) Prioritize Tree Planting – Adjust location parameters to focus tree planting efforts
- 5) Generate Results – To share with others and promote the benefits of trees!

# i-Tree Landscape

landscape.itreetools.org



## How it works:

i-Tree Landscape is a web browser application that uses tree cover maps and other data to spatially estimate ecosystem services of trees. It can help map optimal locations to plant or protect trees in order to sustain these services based on user-specified parameters related to forest and tree stocking and Census data.

- Census block groups & places
- Counties, states, congressional districts
- State/National Forests & National Parks,
- Tree canopy, impervious cover, land cover:
  - UTC where available & NLCD 2011
- Base maps:
  - Google, Bing, Open Street Map
- ... and more to come!

Quickly and easily  
focus your tree  
planting and forest  
stewardship  
efforts.

Try i-Tree Landscape yourself:  
[landscape.itreetools.org](http://landscape.itreetools.org)

For more information, visit:  
[www.itreetools.org](http://www.itreetools.org)

**How To Prioritize Tree Planting**

Better areas to plant trees, based on existing tree canopy and impervious ground cover, can be expressed by a "Priority Planting Index". This index is built upon individual indices calculated for each of the selected regions on the map. Each criteria affects a region's priority for tree planting:

Recommended (as space is needed for new trees):

- **Tree Stocking Level:** a low level indicates land area that could accommodate trees, but currently does not.

Optional (select 0 to 4):

- **Tree Cover per Capita:** canopy area per person, prioritizing on low amounts (less trees relative to population).
- **Population Density:** the denser the population, the more people to benefit (urban areas).
- **Minority Population Density:** prioritize areas of higher minority percents of the population, according to the US census.
- **Percent Population Below Poverty Line:** areas possibly underserved by tree cover due to economic circumstances (prioritize on the most impoverished).

Each criteria is standardized on a scale of 0 to 1, with 1 representing the selection with the highest priority. Individual criteria scores for each selected region are combined and standardized based on common scenarios or user defined importance (i.e. weight) of each, to produce an overall Priority Planting Index (PPI) value between 0 and 100.

**Current Prioritization Scenario Legend**

Index is from 0 to 100, where 0 is a low priority and 100 is a high priority, based on the criteria assigned.

Type	ID	Highlight	Priority Index
Block Group	391535089003	<input type="checkbox"/>	100
Block Group	391535019001	<input type="checkbox"/>	72
Block Group	391535022003	<input type="checkbox"/>	68
Block Group	391535031001	<input type="checkbox"/>	67
Block Group	391535017001	<input type="checkbox"/>	66
Block Group	391535089002	<input type="checkbox"/>	66
Block Group	391535083011	<input type="checkbox"/>	65
Block Group	391535017002	<input type="checkbox"/>	65
Block Group	391535090002	<input type="checkbox"/>	64
Block Group	391535090001	<input type="checkbox"/>	64
Block Group	391535022001	<input type="checkbox"/>	62
Block Group	391535022004	<input type="checkbox"/>	60



Arbor Day Foundation

