

Tools for assessing and managing Community Forests



i-Tree Newsletter—March 2007

When we say “Community,” we mean it!

Communities must communicate if they are to thrive, and the i-Tree Community is no exception. But with members all over the US and the world, communication is no easy task.

Now there is a great way for users to share information with each other: the i-Tree User's Forum (<http://forums.itreetools.org>).

On this website people involved with i-Tree can post messages to ask and answer questions, explore and contribute to the knowledge base, and find out what other users are thinking and doing.



The Forum is divided into obvious subforums: Forum Rules and Info, General Topics, Applications and Utilities, Project Descriptions, Other, and finally Official i-Tree FAQs.

The Forum is also moderated, meaning that there exist basic [rules of behavior](#), and that moderators and administrators can review, modify or move posts.

To begin, all you have to do is go to the Forum website and browse around. If you want to post, then you have to register as a user: see the Forum's [Getting Started](#) for details. And when you have a question to post, please search the Forum first to see if it has already been answered.

See you on the User's Forum!

The RSS Feed

Q: I give up--what is an RSS feed?

A: RSS stands for "Real Simple Syndication," and it's a method to provide news "feeds" from any website you select.

Q: What's that have to do with me?

A: Here it allows you to easily keep track of new posts to the i-Tree User's Forum without having to check the site all the time.

Q: Sounds good, but how would I do that?

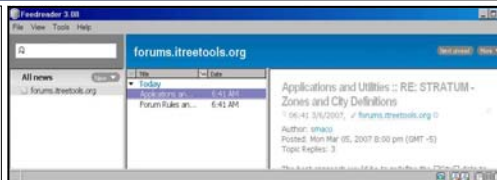
A: You set up a "reader" that automatically retrieves new feeds for you.

Q: But I'm just a regular computer user.

A: Doesn't matter! It is very easy to set up.

Q: Maybe...we'll see! How would I start?

A: First, choose what's best for you: website, desktop, email, web portal, or widget.



Q: How could I make a choice?

A: If you want to see the feeds as soon as they are posted, then use a desktop, email reader or widget. Otherwise, just start with any one and try it for a while.

Q: Well, I'm not promising anything, but I'll give it a shot. Where would I begin?

A: We've laid it all out for you. Just click or go here: <http://forums.itreetools.org/>

i-Tree Mid-cycle Release is coming soon...Do you need to update?

The i-Tree mid-cycle release will correct errors found with UFORE, STRATUM, and MCTI data collection and project establishment. Depending on your project, you may or may not have encountered any problems. If you had trouble establishing a project, transferring data, reopening a project or reporting, updating the i-Tree tools will help solve these problems. Any new users, that have the installation CD, but have yet to start a project, should update tools to avoid any potential problems. Additionally, four new [STRATUM Climate Zones](#) will be available: Northeast, Interior West, Pacific Northwest, and Inland Empire. Details will follow in the next few weeks...

A cooperative initiative



The National
Arbor Day Foundation®

DAVEY

