

Tools for assessing and managing Community Forests



i-Tree Newsletter—February 2008

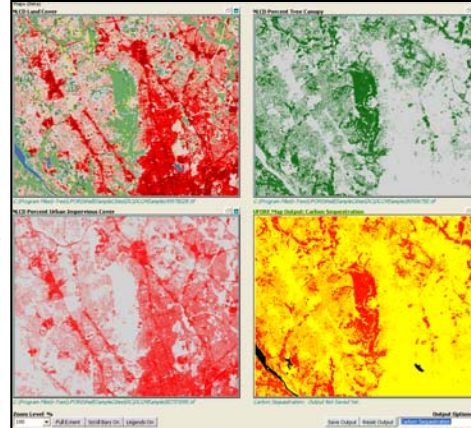
i-Tree version 2.0 is now available!

i-Tree v2.0 features new tools, updated applications, streamlined installation and set up, enhanced reporting features and improved overall functionality. Version 2.0 is based on new research and the comments you've provided about the i-Tree suite—thank you for your participation!

Users of i-Tree v1.x will find valuable upgrades in v2.0. However, projects using v1.x that are currently in the data collection phase may be required to complete data collection before installing the updated application or utility in v2.0. Click on the title links below to update and learn more.

[UFORE Updates](#)

- New analysis tools, including written summary report and mapping tool
- Expanded selection of standard reports
- Integrated PDA Utility
- Report labels and headers updated
- Improved error checking
- Improved graphics



The new **UFORE mapping tool** allows you to display basic spatial urban forest data without GIS software and skills.

[STRATUM updates](#)

- Updated Climate Zone Map and associated functionality
- New Climate Zone functionality for the Temperate Interior West
- Integrated PDA Utility

[Tree Inventory PDA Utility Updates](#)

- Streamlined installation, set-up and data transfer
- Windows Vista compatibility
- Integrated utility launch from applications

[MCTI updates](#)

- Dynamic DBH and condition reporting
- Resolved data field inconsistencies
- Integrated PDA Utility

[Storm Damage Assessment Protocol](#)

- Calculation of standard errors associated with estimates
- Precision Level calculation for protocol deviations
- Improved calculations for rural road designations
- Data operation inconsistencies resolved

The i-Tree Cooperative is Growing!



We are pleased to announce our newest member—the International Society of Arboriculture. ISA's expertise, resources, and links to professional arborists the world over represents a giant leap in the i-Tree Cooperative's outreach efforts. Welcome aboard!

New Utility: Species Selector

The [Species Selector](#) (Beta) is a new, free standing i-Tree Utility designed help users choose what species to plant based on the environmental benefits they provide. By providing a relative rating for environmental benefits of each tree species at maturity, this tool is designed to complement existing tree selection programs that rank species for esthetics and/or other features.

This Utility has a database of 1,600 species and rates the following tree functions:

- Air pollution removal
- Air temperature reduction
- Ultraviolet radiation reduction
- Carbon storage
- Pollen allergenicity
- Building energy conservation
- Wind reduction
- Stream flow reduction

Are you an active member of the i-Tree Community?

Get involved with the [i-Tree User Forum](#): share your experiences, communicate with other users, and get all your i-Tree questions answered!

A cooperative
initiative between:



DAVEY



**The National
Arbor Day Foundation**

