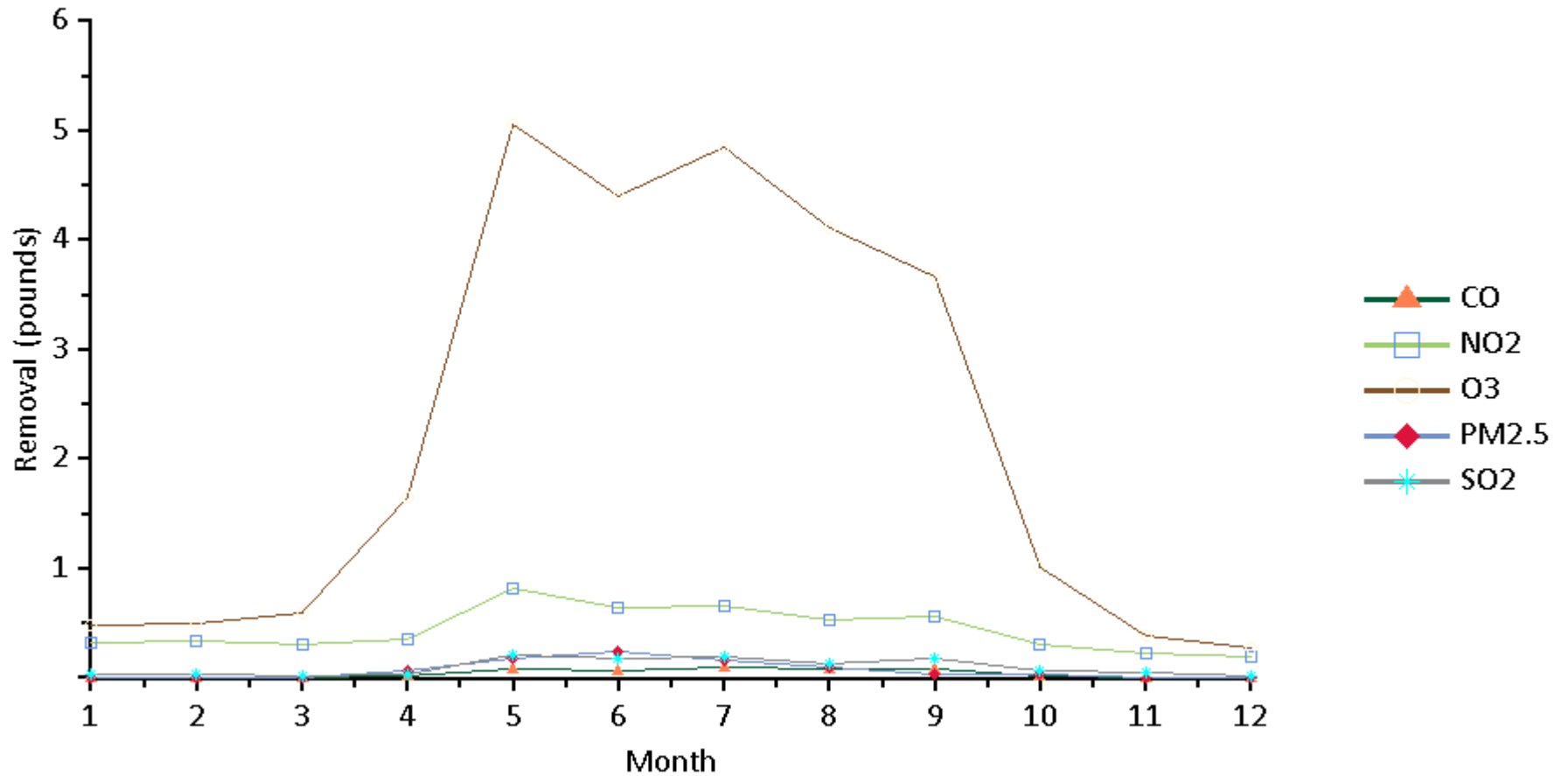


## Pollution Removal by Trees and Shrubs - Monthly Removal

Location: Springfield, Hampden, Massachusetts, United States of America

Project: Springfield Squares, Series: Parks, Year: 2018

Generated: 4/8/2019



## Pollution Removal by Trees and Shrubs - Monthly Removal

Location: Springfield, Hampden, Massachusetts, United States of America

Project: Springfield Squares, Series: Parks, Year: 2018

Generated: 4/8/2019



Pollutant Removal		
Month	Pollutant	Amount (pounds)
1	CO	0.006
	NO2	0.319
	O3	0.476
	PM2.5	0.000
	SO2	0.027
2	CO	0.006
	NO2	0.332
	O3	0.496
	PM2.5	0.000
	SO2	0.027
3	CO	0.006
	NO2	0.302
	O3	0.586
	PM2.5	0.000
	SO2	0.023
4	CO	0.024
	NO2	0.355
	O3	1.645
	PM2.5	0.058
	SO2	0.038
5	CO	0.080
	NO2	0.817
	O3	5.055
	PM2.5	0.168
	SO2	0.203

## Pollution Removal by Trees and Shrubs - Monthly Removal

Location: Springfield, Hampden, Massachusetts, United States of America

Project: Springfield Squares, Series: Parks, Year: 2018

Generated: 4/8/2019



Pollutant Removal		
Month	Pollutant	Amount (pounds)
6	CO	0.069
	NO2	0.638
	O3	4.395
	PM2.5	0.245
	SO2	0.176
7	CO	0.094
	NO2	0.649
	O3	4.843
	PM2.5	0.162
	SO2	0.189
8	CO	0.077
	NO2	0.533
	O3	4.113
	PM2.5	0.091
	SO2	0.130
9	CO	0.077
	NO2	0.565
	O3	3.663
	PM2.5	0.028
	SO2	0.169
10	CO	0.011
	NO2	0.307
	O3	1.010
	PM2.5	0.032
	SO2	0.059

## Pollution Removal by Trees and Shrubs - Monthly Removal

Location: Springfield, Hampden, Massachusetts, United States of America

Project: Springfield Squares, Series: Parks, Year: 2018

Generated: 4/8/2019



Pollutant Removal		
Month	Pollutant	Amount (pounds)
11	CO	0.005
	NO2	0.222
	O3	0.380
	PM2.5	0.000
	SO2	0.046
12	CO	0.005
	NO2	0.198
	O3	0.270
	PM2.5	0.000
	SO2	0.022

## Pollution Removal by Trees and Shrubs - Monthly Removal

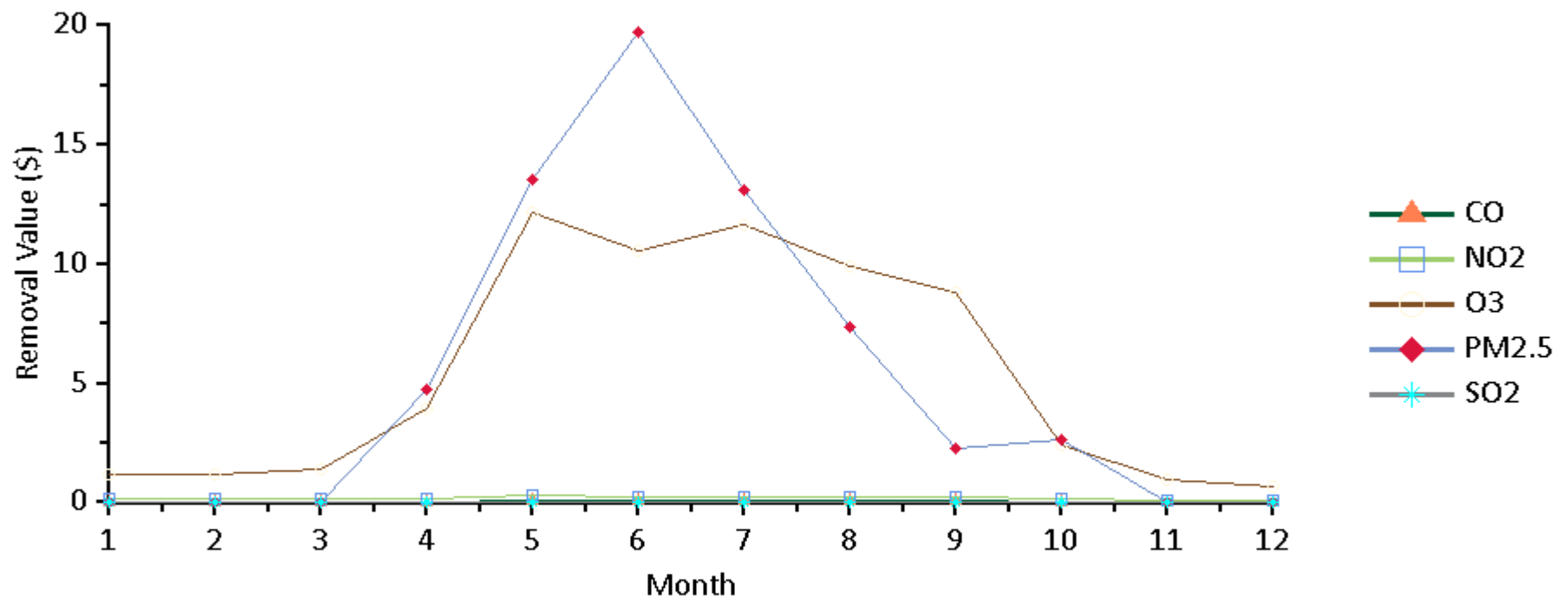
Location: Springfield, Hampden, Massachusetts, United States of America

Project: Springfield Squares, Series: Parks, Year: 2018

Generated: 4/8/2019



### Pollutant Removal Value in Springfield Squares



Pollution removal value is calculated based on the prices of \$0.69 per pound (CO), \$2.40 per pound (O3), \$0.36 per pound (NO2), \$0.10 per pound (SO2), \$80.58 per pound (PM2.5).

A value of zero may indicate that ancillary data (pollution, weather, energy, etc.) may not be available for this location or that the reported amounts are too small to be shown.

## Pollution Removal by Trees and Shrubs - Monthly Removal

Location: Springfield, Hampden, Massachusetts, United States of America

Project: Springfield Squares, Series: Parks, Year: 2018

Generated: 4/8/2019



Pollutant Removal Value		
Month	Pollutant	Value (\$)
1	CO	0.004
	NO2	0.116
	O3	1.144
	PM2.5	0.002
	SO2	0.003
2	CO	0.004
	NO2	0.121
	O3	1.193
	PM2.5	0.000
	SO2	0.003
3	CO	0.004
	NO2	0.110
	O3	1.409
	PM2.5	0.002
	SO2	0.002
4	CO	0.016
	NO2	0.129
	O3	3.954
	PM2.5	4.704
	SO2	0.004
5	CO	0.055
	NO2	0.297
	O3	12.151
	PM2.5	13.550
	SO2	0.020

## Pollution Removal by Trees and Shrubs - Monthly Removal

Location: Springfield, Hampden, Massachusetts, United States of America

Project: Springfield Squares, Series: Parks, Year: 2018

Generated: 4/8/2019



Pollutant Removal Value		
Month	Pollutant	Value (\$)
6	CO	0.047
	NO2	0.232
	O3	10.564
	PM2.5	19.740
	SO2	0.017
7	CO	0.065
	NO2	0.236
	O3	11.641
	PM2.5	13.092
	SO2	0.018
8	CO	0.053
	NO2	0.194
	O3	9.887
	PM2.5	7.317
	SO2	0.013
9	CO	0.053
	NO2	0.205
	O3	8.805
	PM2.5	2.271
	SO2	0.016
10	CO	0.007
	NO2	0.112
	O3	2.429
	PM2.5	2.609
	SO2	0.006

## Pollution Removal by Trees and Shrubs - Monthly Removal

Location: Springfield, Hampden, Massachusetts, United States of America

Project: Springfield Squares, Series: Parks, Year: 2018

Generated: 4/8/2019



Pollutant Removal Value		
Month	Pollutant	Value (\$)
11	CO	0.003
	NO2	0.081
	O3	0.914
	PM2.5	0.001
	SO2	0.004
12	CO	0.004
	NO2	0.072
	O3	0.648
	PM2.5	0.001
	SO2	0.002

Pollution removal value is calculated based on the prices of \$0.69 per pound (CO), \$2.40 per pound (O3), \$0.36 per pound (NO2), \$0.10 per pound (SO2), \$80.58 per pound (PM2.5).

A value of zero may indicate that ancillary data (pollution, weather, energy, etc.) may not available for this location or that the reported amounts are too small to be shown.



## Pollution Removal by Trees and Shrubs - Monthly Removal

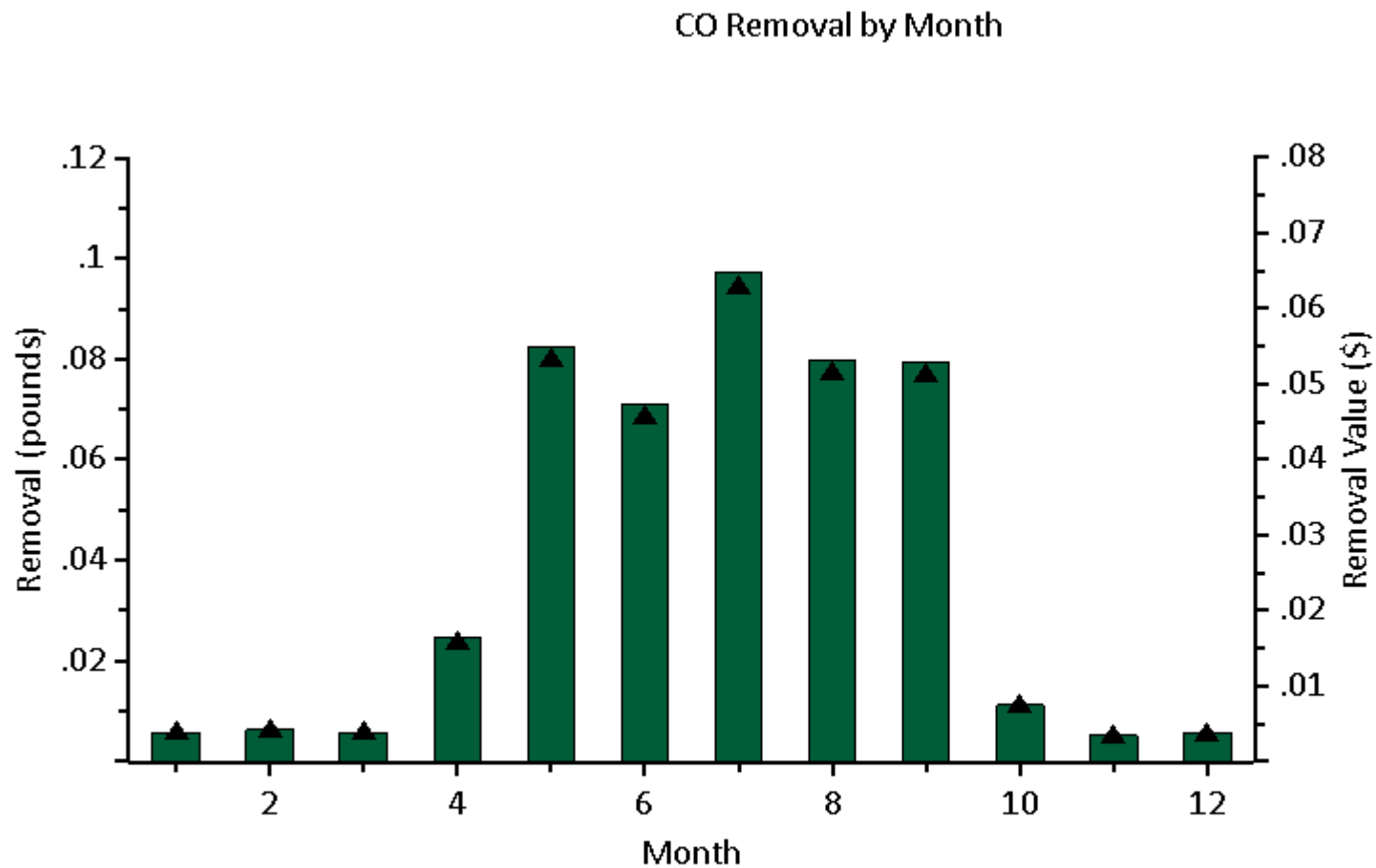
Location: Springfield, Hampden, Massachusetts, United States of America

Project: Springfield Squares, Series: Parks, Year: 2018

Generated: 4/8/2019



▲ Removal  
■ Value



CO value is calculated based on the price of \$0.69 per pound.

## Pollution Removal by Trees and Shrubs - Monthly Removal

Location: Springfield, Hampden, Massachusetts, United States of America

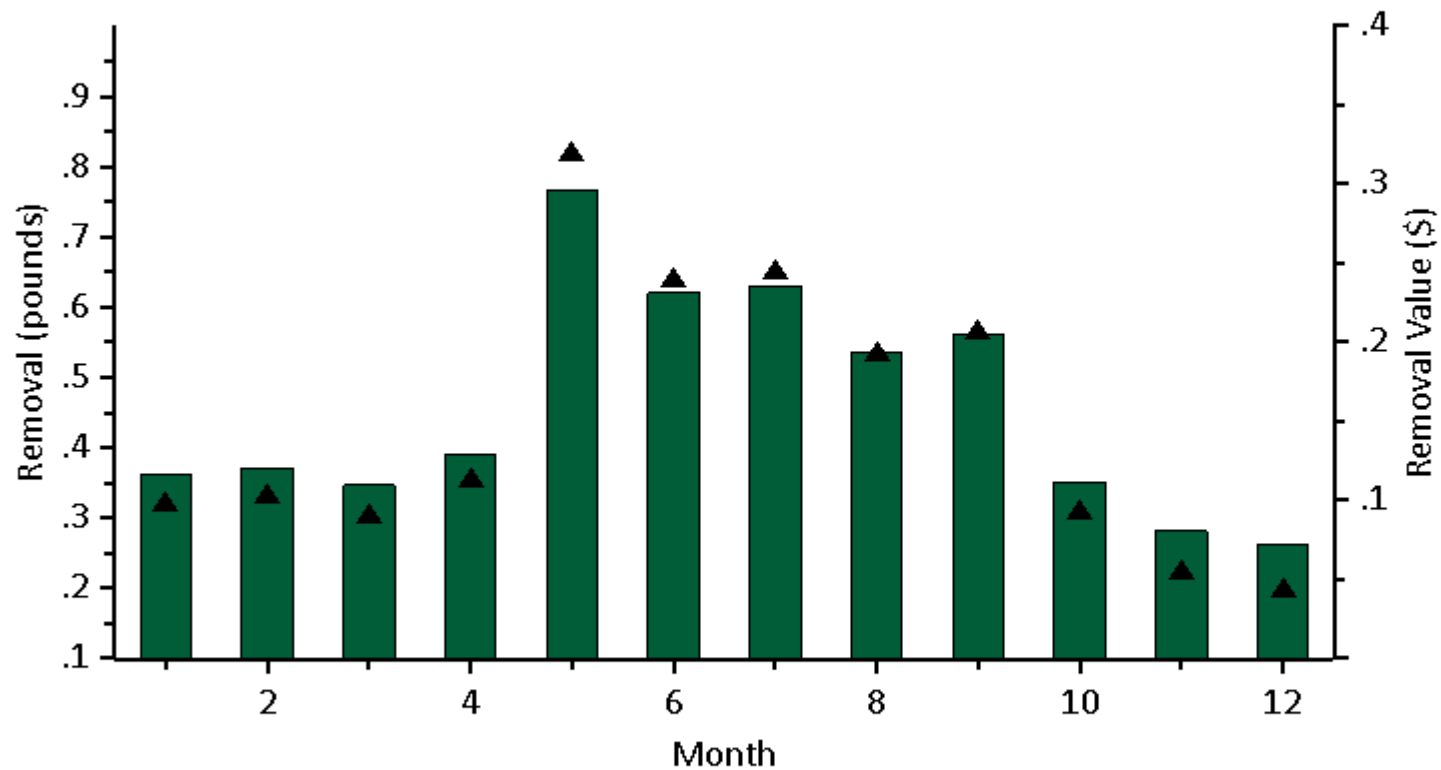
Project: Springfield Squares, Series: Parks, Year: 2018

Generated: 4/8/2019



▲ Removal  
■ Value

NO2 Removal by Month



NO2 value is calculated based on the price of \$0.36 per pound.

## Pollution Removal by Trees and Shrubs - Monthly Removal

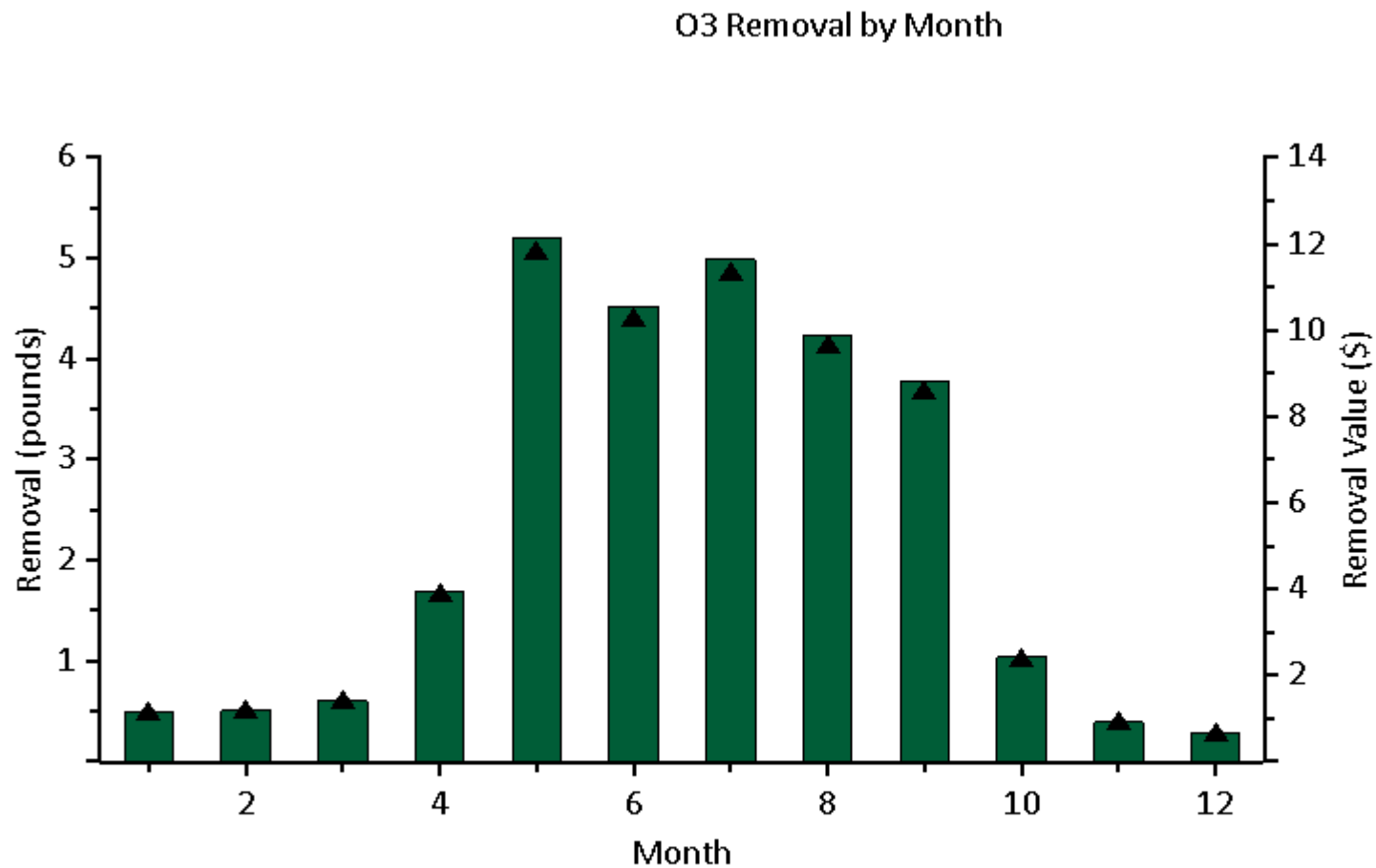
Location: Springfield, Hampden, Massachusetts, United States of America

Project: Springfield Squares, Series: Parks, Year: 2018

Generated: 4/8/2019



▲ Removal  
■ Value



O3 value is calculated based on the price of \$2.40 per pound.

## Pollution Removal by Trees and Shrubs - Monthly Removal

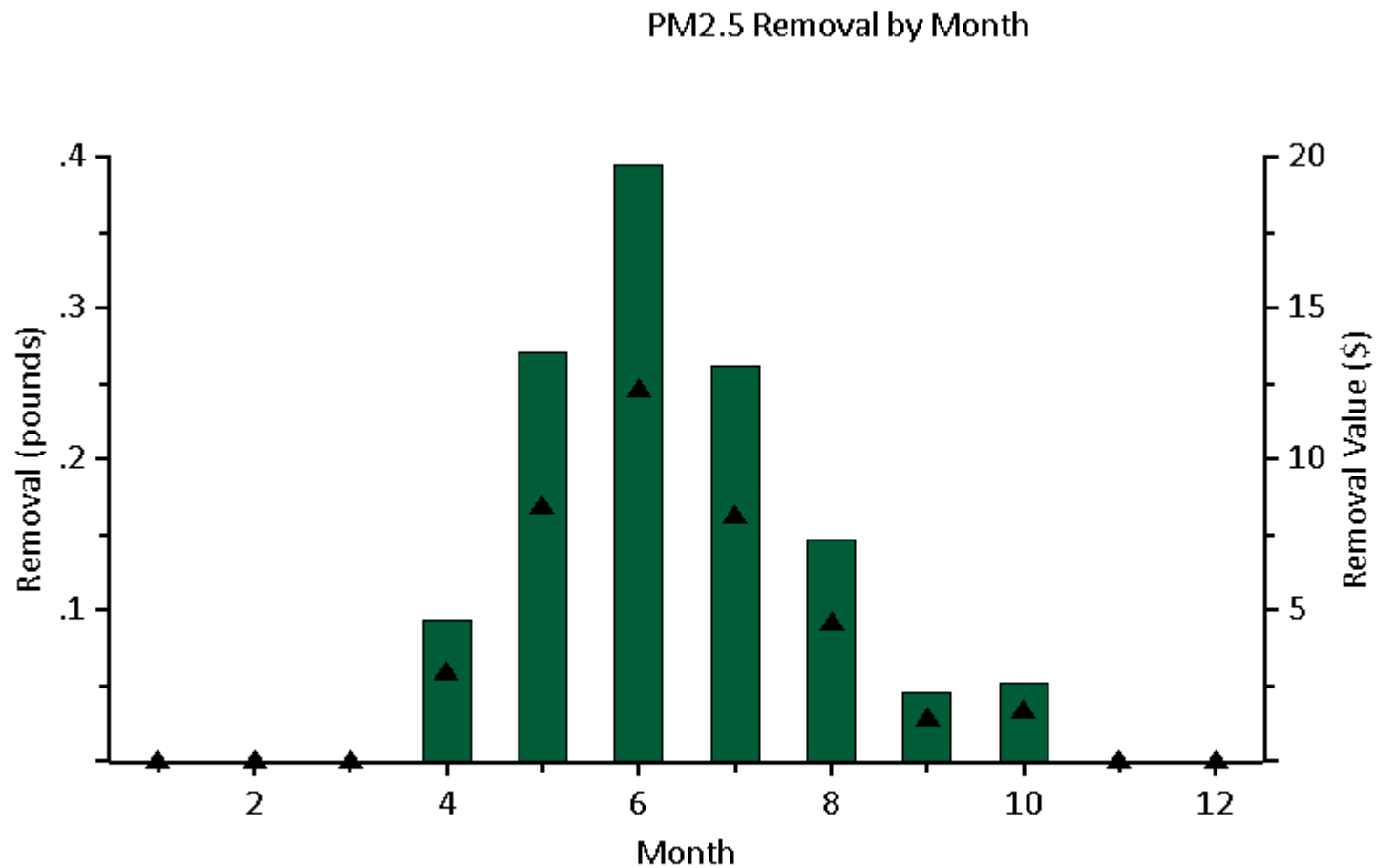
Location: Springfield, Hampden, Massachusetts, United States of America

Project: Springfield Squares, Series: Parks, Year: 2018

Generated: 4/8/2019



▲ Removal  
■ Value



PM2.5 value is calculated based on the price of \$80.58 per pound.

## Pollution Removal by Trees and Shrubs - Monthly Removal

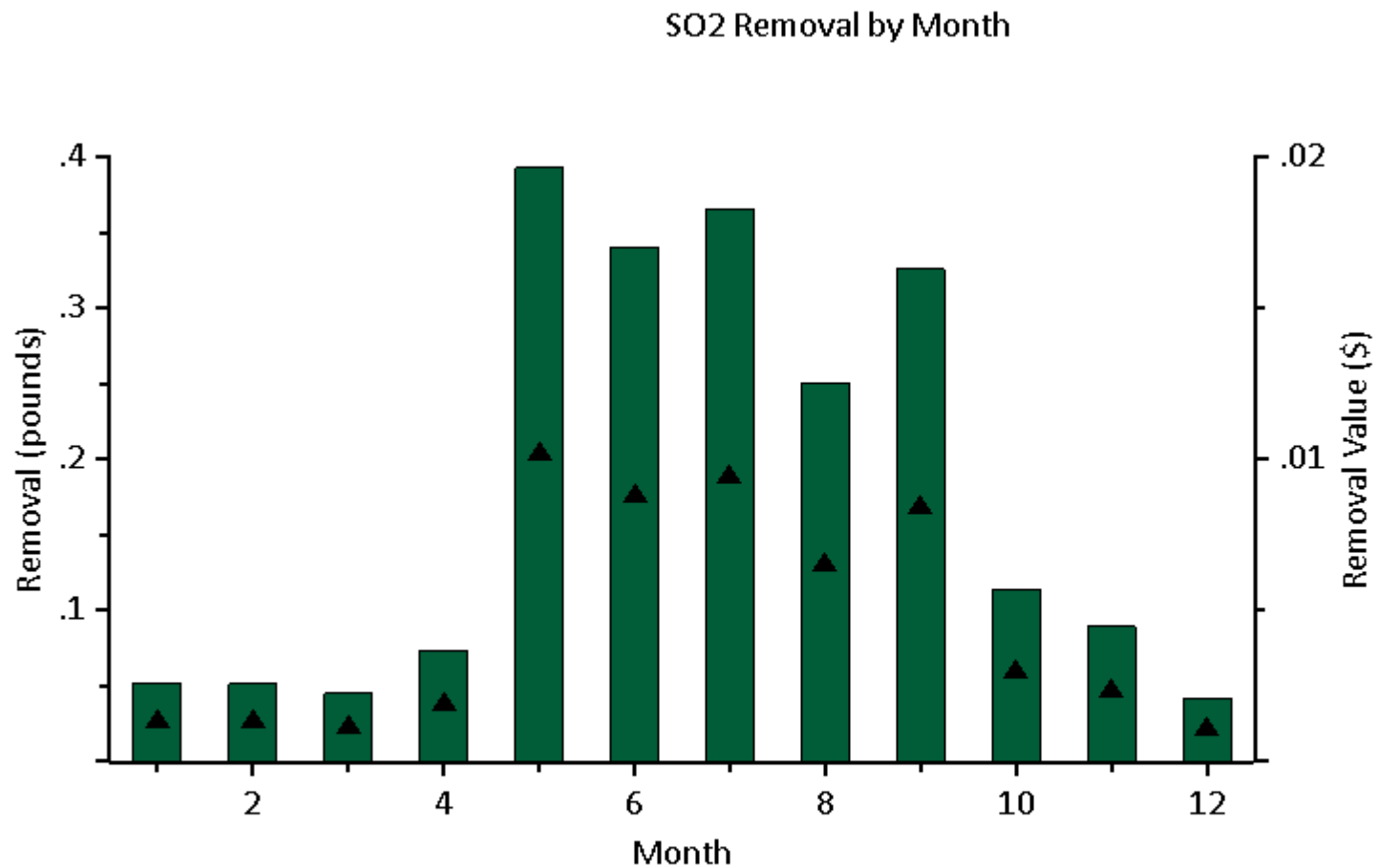
Location: Springfield, Hampden, Massachusetts, United States of America

Project: Springfield Squares, Series: Parks, Year: 2018

Generated: 4/8/2019



▲ Removal  
■ Value



SO2 value is calculated based on the price of \$0.10 per pound.